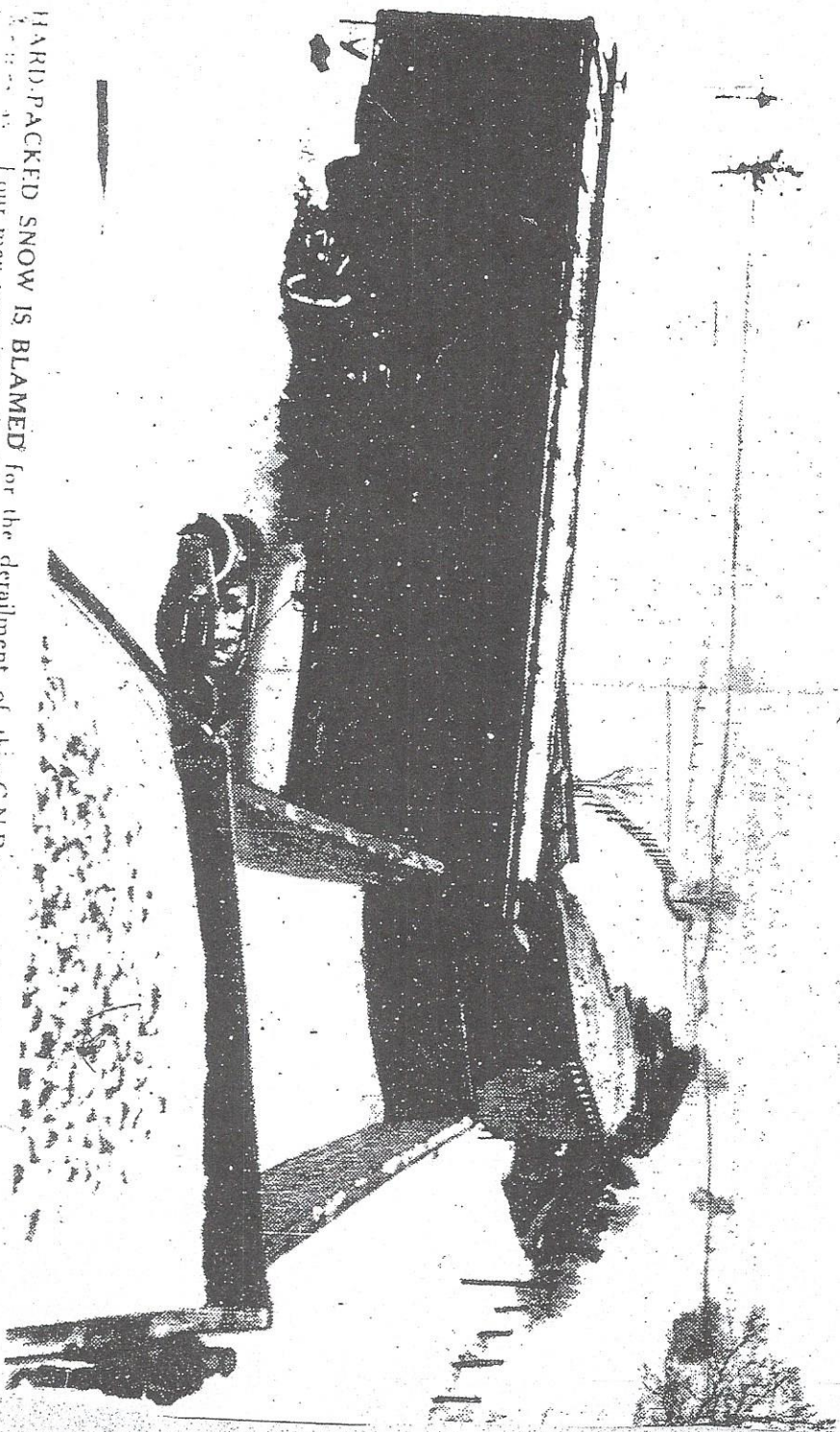


1946
Feb 28

Toronto Star Feb 28 1946

SNOW IS BLAMED FOR TRAIN DERAILMENT; FOUR INJURED

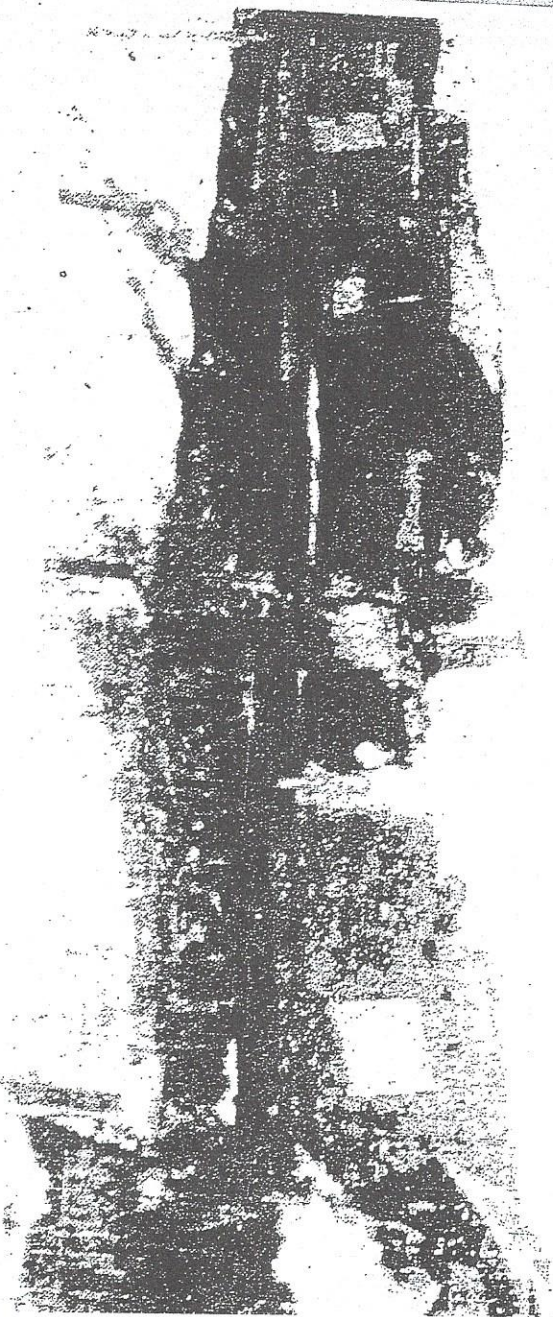


HARD-PACKED SNOW IS BLAMED for the derailment of this C.N.R. two-engined freight near Mount Vernon. Four men were injured, eight cars were derailed and several feet of track damaged. H. W. Griffin of the C.N.R. was hurt 20 feet through the air when the front locomotive plunged over the embankment.

ENGINEER TRAPPED-IN CAB HURLED OUT BY DERAILMENT

February 28 1946

Packed snow was blamed when this C.N.R. two-engine freight left the rails near Mount
ing H. W. Griffin, Brantford, engineer, and John Newman, Hamilton, fireman. Griffin was hurled
when the front locomotive plunged over an embankment. Edward McHardy and Walter Weyer
and fireman on the second engine, received lesser injuries. Eight cars were derailed and several



February 28

1946 G/abe