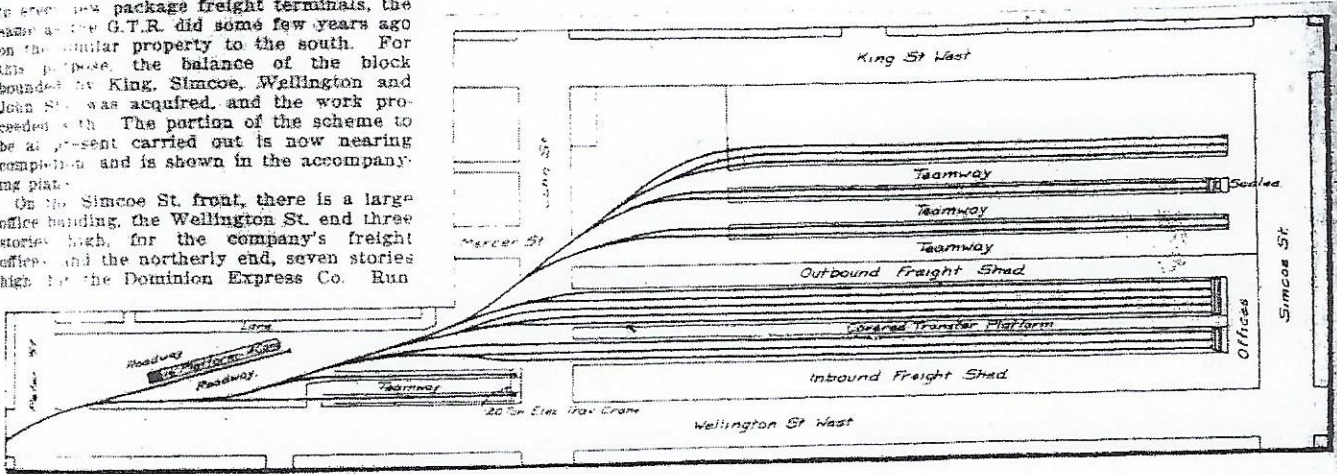


## New Toronto Freight Terminals for Canadian Pacific Railway.

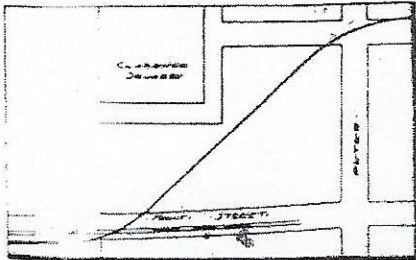
About 20 years ago, the C.P.R. acquired the old Government House property, corner of King and Simcoe Sts., Toronto, on which to erect new package freight terminals, the same as the G.T.R. did some few years ago on the similar property to the south. For this purpose, the balance of the block bounded by King, Simcoe, Wellington and John Sts. was acquired, and the work proceeded with. The portion of the scheme to be at present carried out is now nearing completion and is shown in the accompanying plan.

On the Simcoe St. front, there is a large office building, the Wellington St. end three stories high, for the company's freight offices, and the northerly end, seven stories high, for the Dominion Express Co. Run



Plan of New Canadian Pacific Railway Freight Terminals at Toronto.

ning on from the office buildings, there are two 900 ft. freight sheds, one for incoming and the other for outgoing freight. Between the two are 8 tracks. There is a covered transfer platform running along between the buildings, also 900 ft. long. To

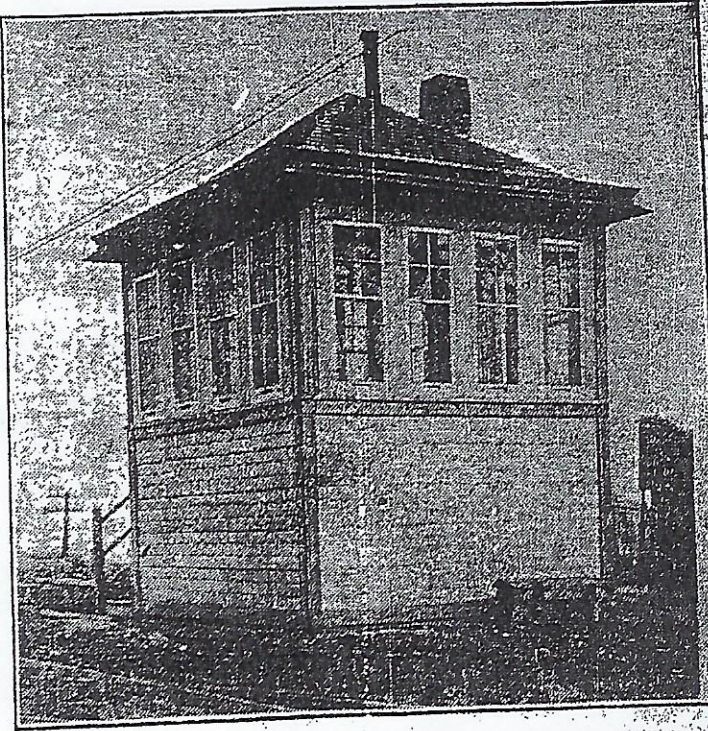


Plan of New C.P.R. Freight Terminals.

the of the buildings there are three tracks with 7 team tracks. The frontage of St. to the north is to be utilized for office and freight shed extension.

West of John St., additional property was acquired for heavy team tracks. The approach to the yards is through this end of the property. The approach tracks leave the main line at Bathurst St., ascend the escarpment along Front St., reaching the upper level at Spadina Ave., as shown in the smaller illustration. From that point the line cuts across blocks on its way to the new terminal property.

OCTOBER 1913



New switch-house for controlling the switching of cars into the new C.P.R. freight yards on old Government House site. It is located at the foot of Spadina.

Star 12/28/1912