

GREAT
NORTHERN
RAILWAY
IN
CANADA

6

GREAT NORTHERN RAILWAY IN CANADA

THE FOLLOWING IS PRESENTED AS A
CATOLOGUE OF PHOTOGRAPHS THAT
CAN BE FOUND ON-LINE FROM THE
CITY OF VANCOUVER'S ARCHIVES AS
ONLY AN AID TO RESEACHERS.

wreckage after a head-on collision between a Great Northern Railway train and a Canadian National Railway train]

- [Major Matthews collection](#)
- [Collected photographs](#)
- [Incoming correspondence photographs](#)
- [View of the wreckage after a head-on collision between a Great Northern Railway train and a Canadian National Railway train]



Title and statement of responsibility area

Title proper

[View of the wreckage after a head-on collision between a Great Northern Railway train and a Canadian National Railway train]

General material designation

- Photograph

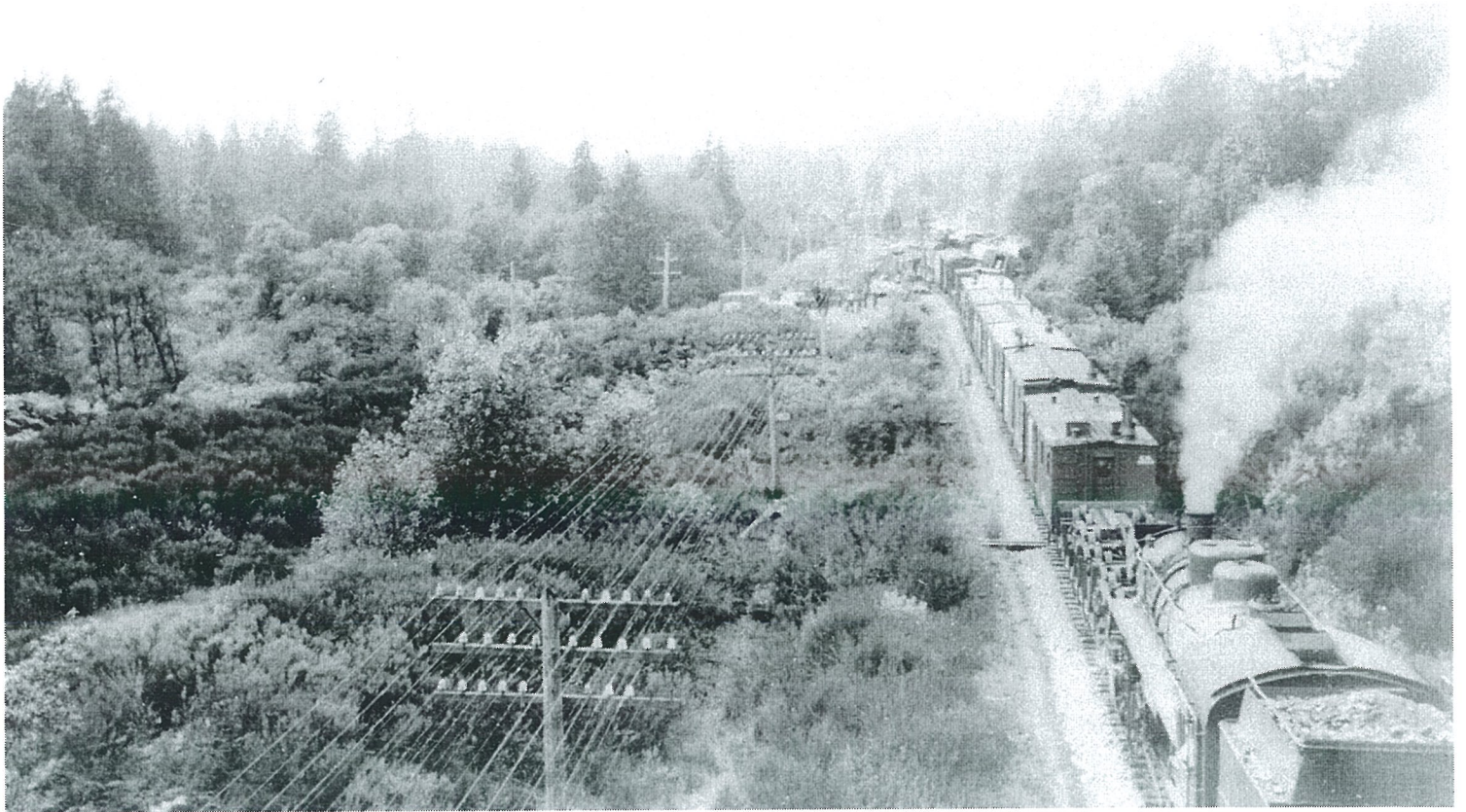
Level of description

Item

Reference code

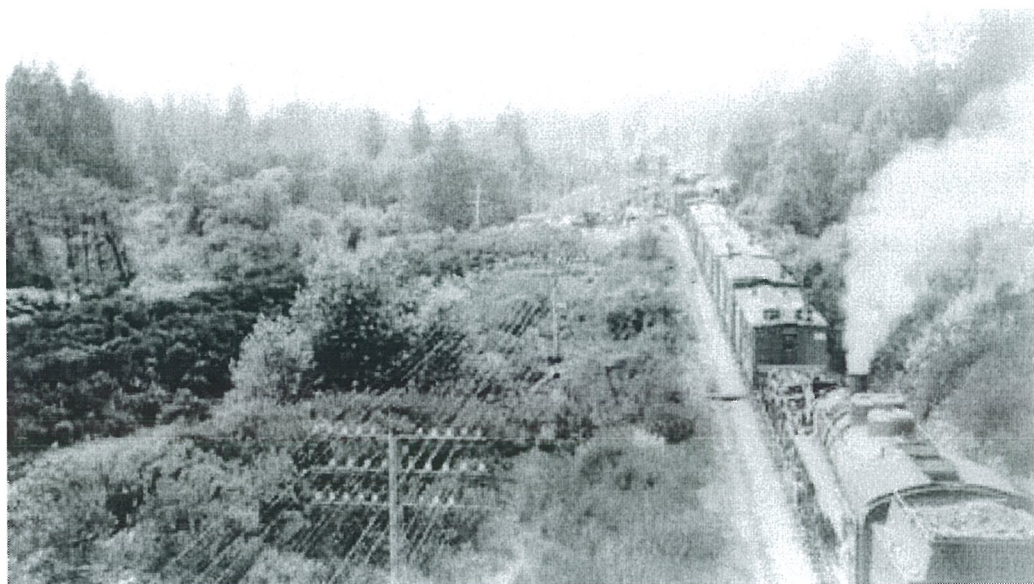
AM54-S4-2-: CVA 371-2173





wreckage after a head-on collision between a Great National Railway train and Canadian National Railway train]

- Major Matthews collection
- Collected photographs
- Incoming correspondence photographs
- [View of the wreckage after a head-on collision between a Great National Railway train and Canadian National Railway train]



Title and statement of responsibility area

Title proper

[View of the wreckage after a head-on collision between a Great National Railway train and Canadian National Railway train]

General material designation

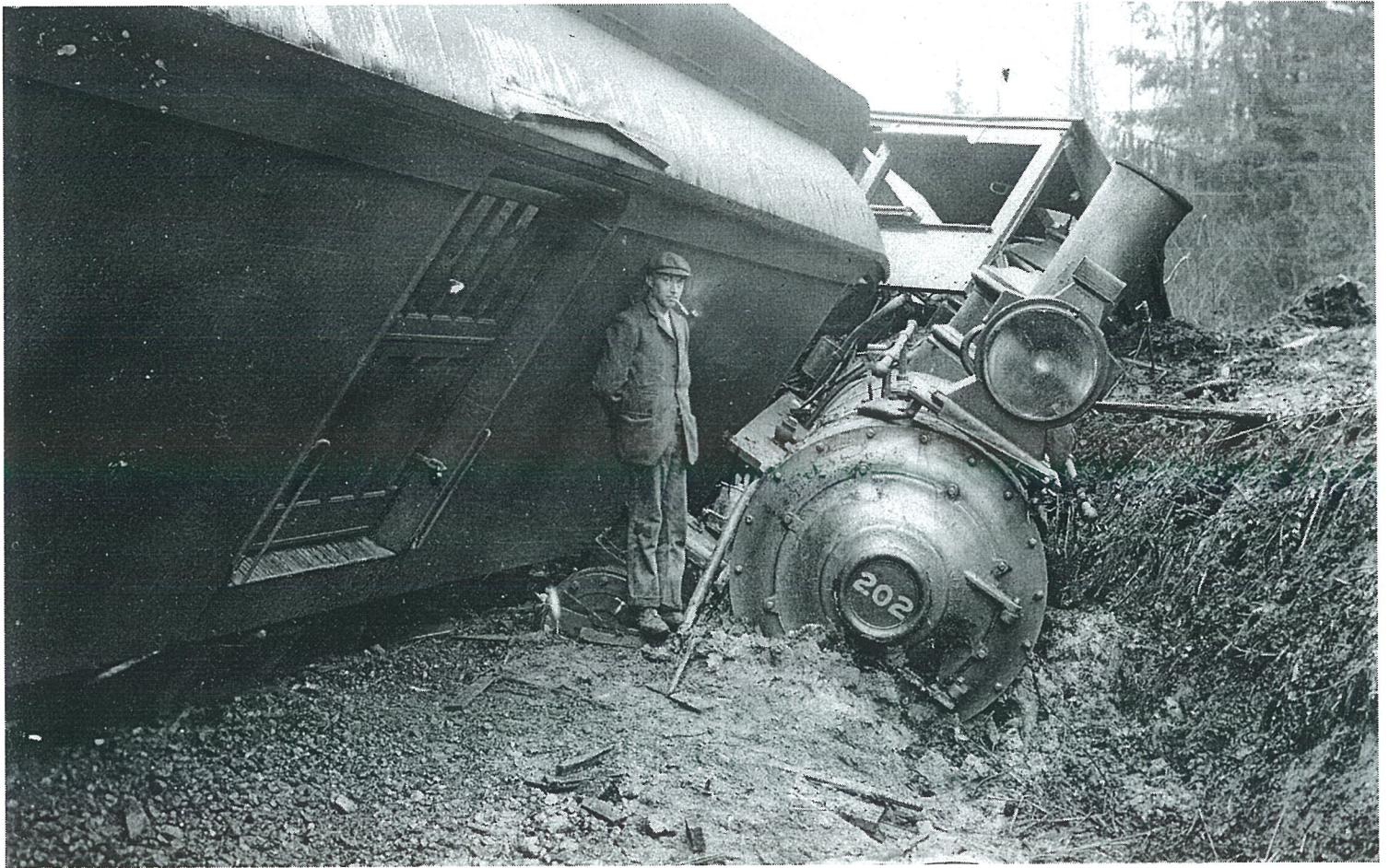
- Photograph

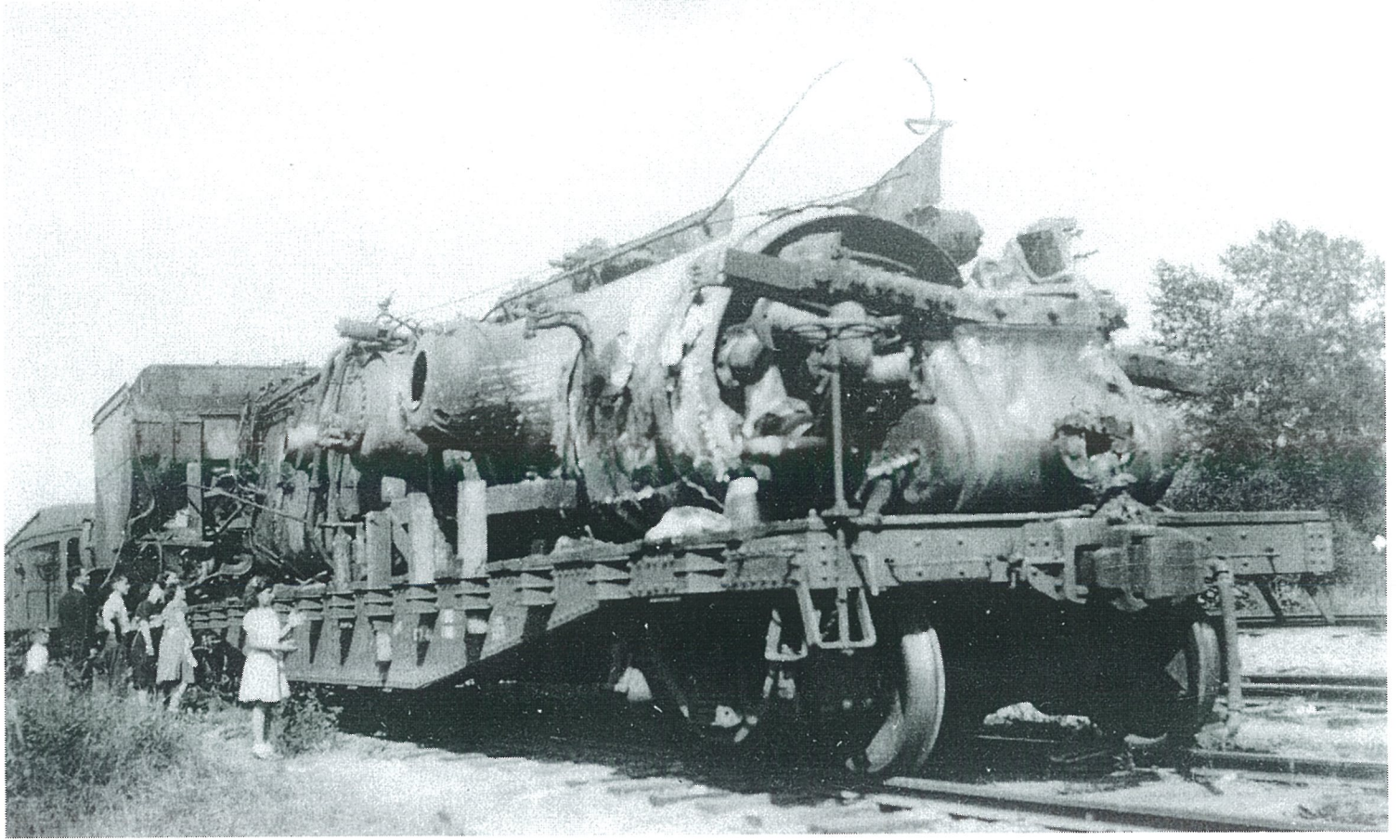
Level of description

Item

Reference code

AM54-S4-2-: CVA 371-2175





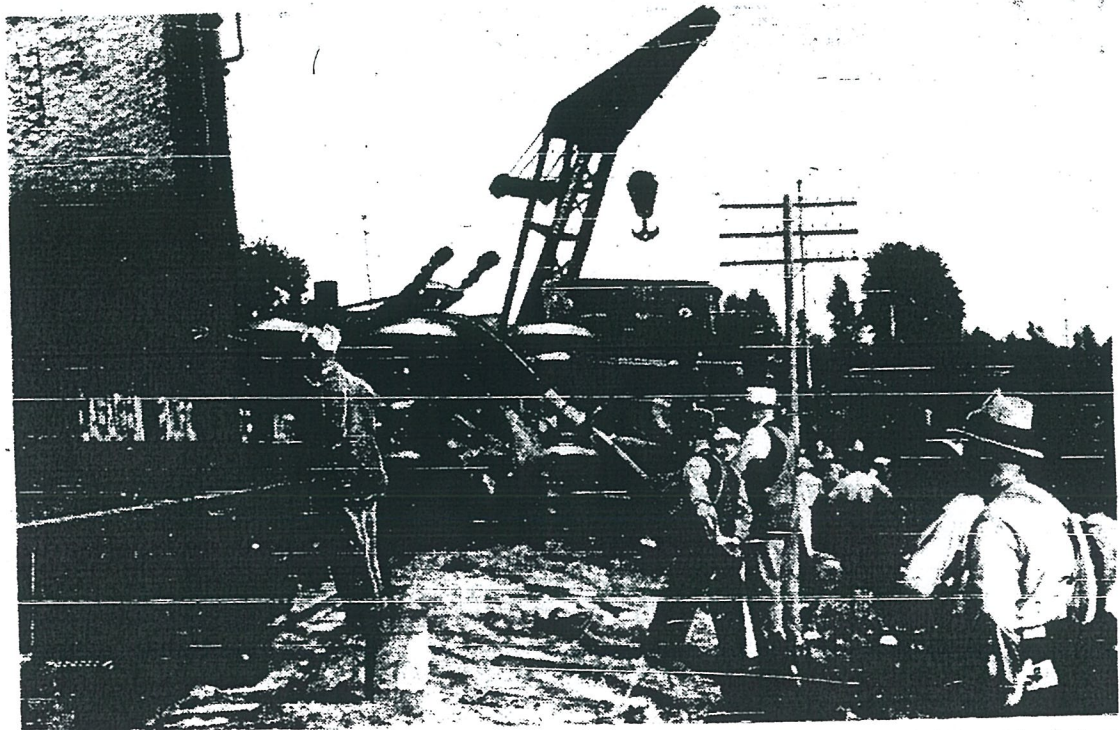
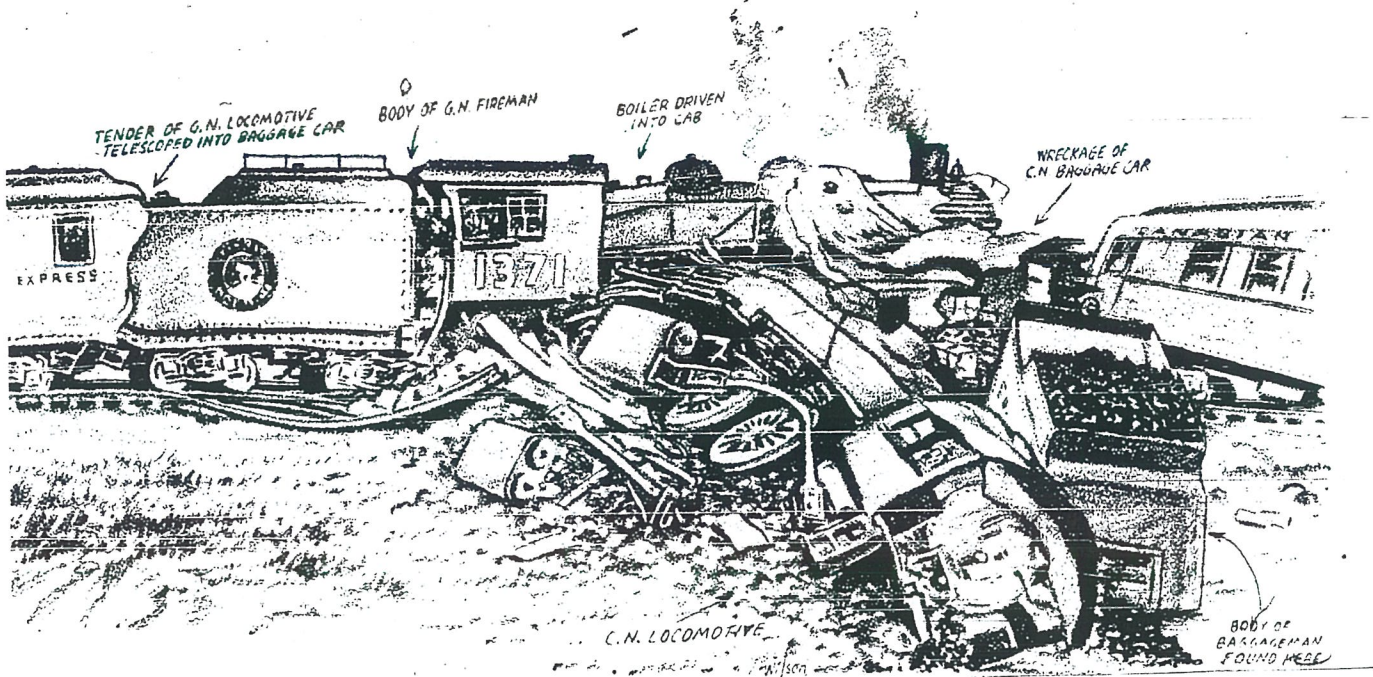
THE SECOND
FRONT PAGE

The Vancouver Sun.

VANCOUVER, BRITISH COLUMBIA, FRIDAY, JULY 25, 1941

'Witness' Graphic Story of Fatal Sapper

The Vancouver Sun Artist Goes to a Train Wreck



This photo shows Canadian National engine, tossed on its side at right angles to original direction of travel. Work gangs and two railway cranes desperately clear debris in effort to open line.

Force of the impact tore loose a cylinder of the C. N. engine, twisted a driving rod (lying diagonally in photo), and left the cylinder at the cab end of the locomotive.

Behind looms the Canadian National tender, disposed of

