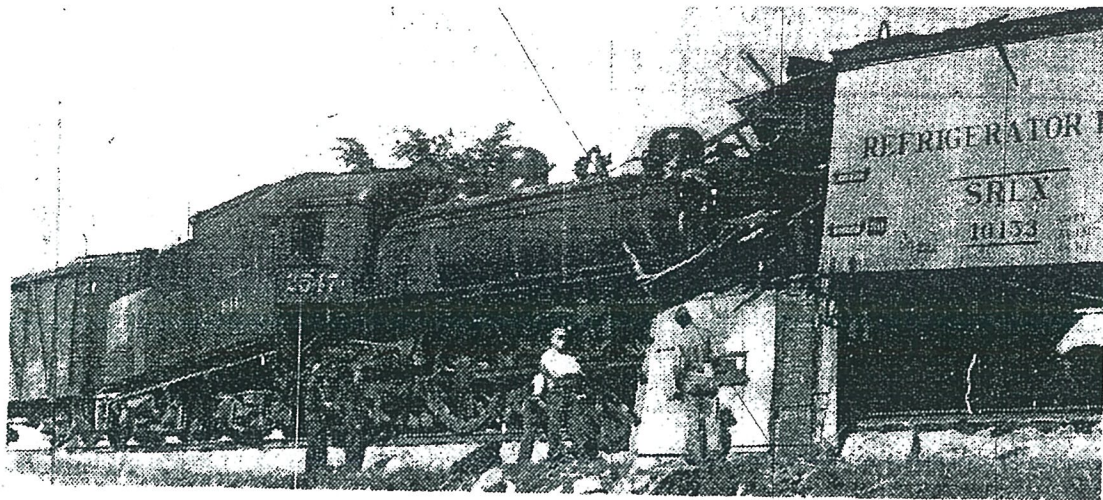


CPR

LONDON
DIVISION

JULY 6, 1940



CABOOSE DEMOLISHED WHEN FREIGHT TRAINS COLLIDE

When an east-bound freight train, rear of a refrigerator car. Main line traffic was held up for hours. Picture shows how the caboose was literally obliterated by the oncoming locomotive. It was empty at the time, the train crew being up front investigating a hot box at the front end of the front train. Engineer D. G. McDonald received minor injuries.

HUNDREDS OF HOLIDAYERS HELD UP BY TRAIN WRECK

U.S. Tourists on Chicago
Flyer Stopped at
Cooksville

CAR TRAFFIC STALLS

Cooksville, July 6.—A rear-end collision today between two C.P.R. freight trains at Lyle's crossing, two miles west of Cooksville, derailed a locomotive and car and caused minor injuries to Engineer D. G. McDonald.

The official C.P.R. statement said cause of the mishap is as yet undetermined, and an investigation is proceeding.

H. C. Riordan, station agent at Cooksville, said all available help has been rushed to the scene of the wreck. Emergency crews were still working three hours later to clear the tracks, he added.

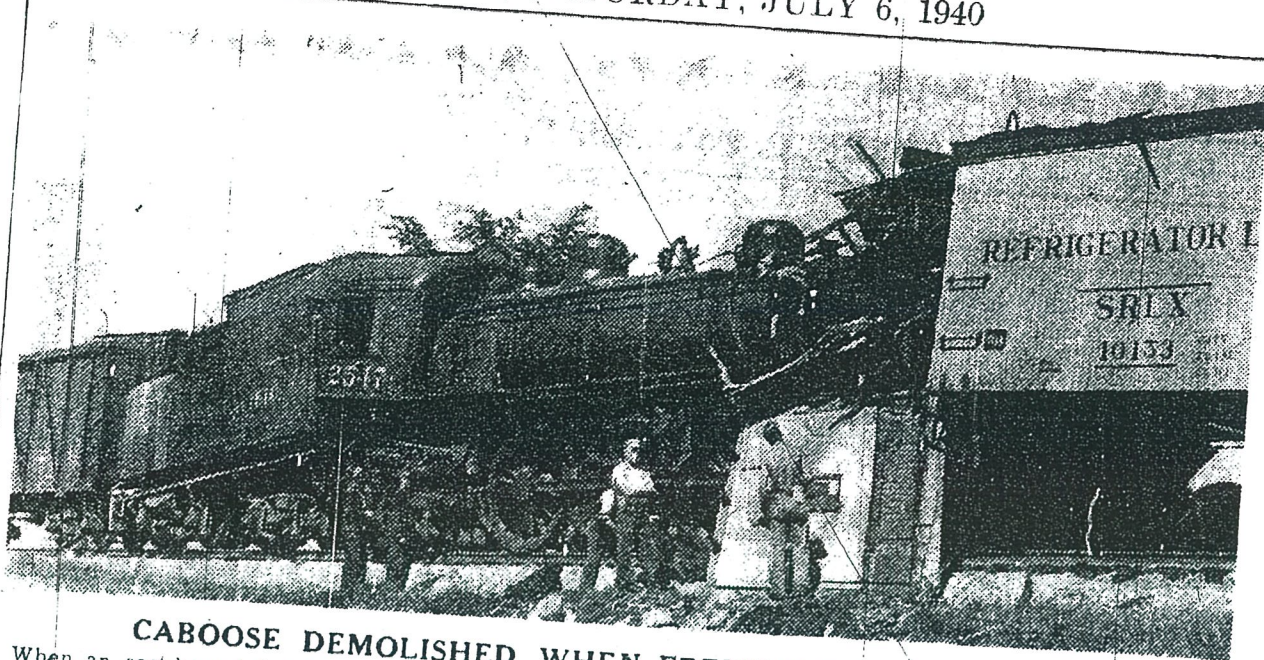
The derailment is holding up the crack C.P.R. Chicago flyer, loaded with holiday passengers bound for the U.S. The long train is waiting behind a wrecking train, 500 yards east of Cooksville station.

Automobile traffic slowed to a crawl across the tracks. The wrecking train, dispatched from the West Toronto yards, has been stalled for nearly three hours unable to get closer than a mile and a half to the wreck.

Passengers aboard the flyer are strolling up and down the track, while some of the more curious began to walk towards the wreck, two miles up the line. At 10.30, all lines were still clogged, the C.P.R. announced.

July 6
1940

TORONTO DAILY STAR, SATURDAY, JULY 6, 1940



CABOOSE DEMOLISHED WHEN FREIGHT TRAINS COLLIDE

When an east-bound freight train, rear of a refrigerator car. Main line traffic was held up for hours. Picture shows how the caboose was literally obliterated by the oncoming locomotive. It was empty at the time, the train crew being up front investigating a hot box at the front end of the front train. Engineer D. G. McDonald received minor injuries.

HUNDREDS OF HOLIDAYERS HELD UP BY TRAIN WRECK

July 6 1940