

ONTARIO
AND
QUEBEC

TRAIN WRECKS
COURTESY COLIN
CHURCHER



Details of Railway Accidents in the Ottawa Area

1907, March 1 - Head on collision between a passenger train and a freight train at Mountain, Canadian Pacific Winchester subdivision. 2 killed, 3 injured.

RG 46 vol. 1412 file 4862

1. Head-on collision between passenger train 6, engine 908, and westbound freight extra 984.
2. Cause was that engineer on 984 failed to determine where to meet fast passenger train 6 when receiving despatcher's order no. 36, form 19 at Winchester advising that train 6 was running 50 mins. late from Kemptville Junction to Vaudreuil.
3. Result was that engineer, fireman and baggageman of train 6 were injured, Dominion Express Messenger and his Assistant were burned to death while pinned in express car no. 1756 which was set on fire by oil lamps lighted in the same car.
4. Despatcher issued order no. 36 at 5.25 am. To passenger train 6 and 984 (3rd No. 50) at Finch, also 976 at Monklands. No. 6, engine 908 will run 50 minutes late Kemptville Junction to Vaudreuil. Engineer of 984 misread his watch and told fireman they had lots of time to go to Kemptville to take coal and water when they should only have gone to Mountain.

[Return to Main Page of Railway Accidents](#)

Updated January 2014



Details of Railway Accidents in the Ottawa Area

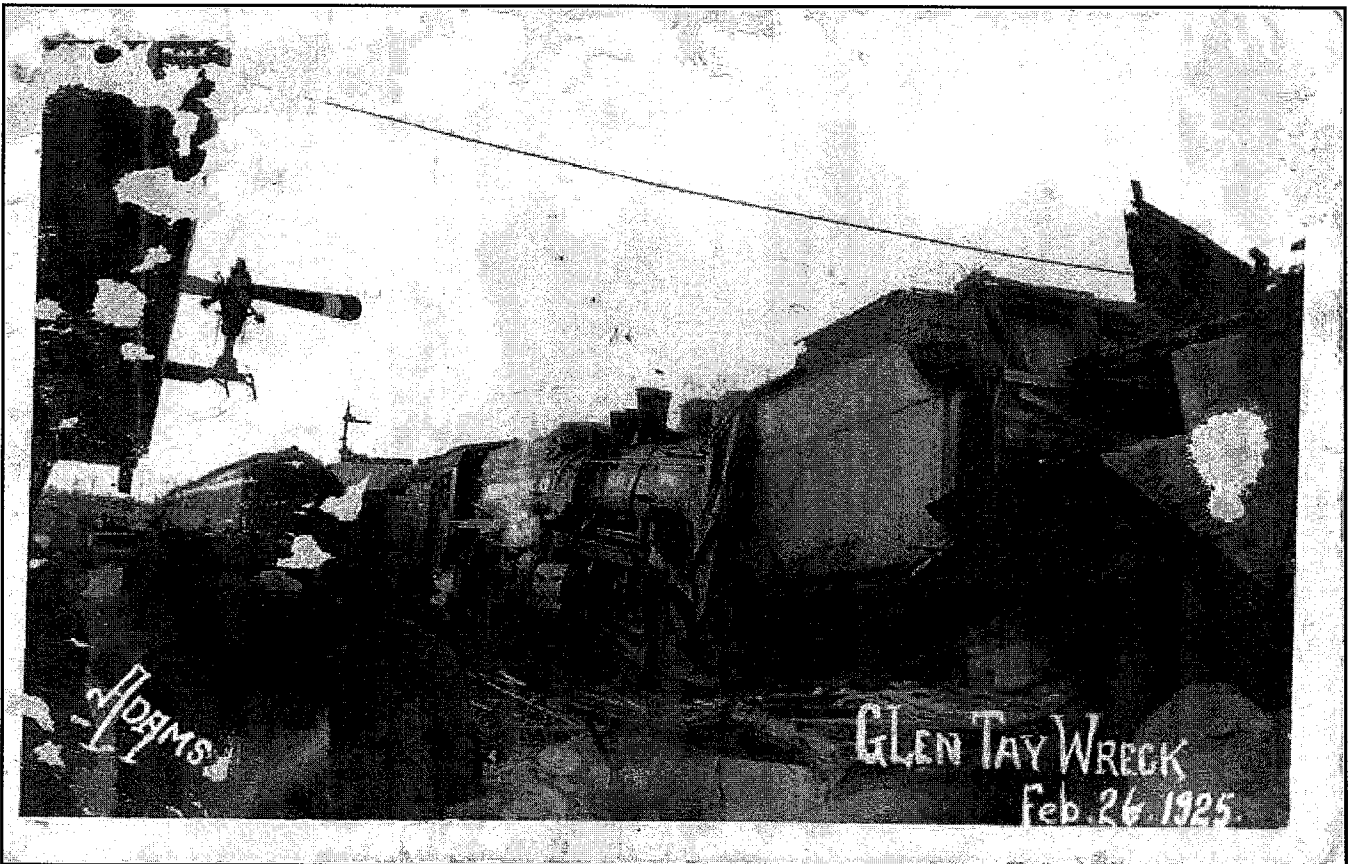
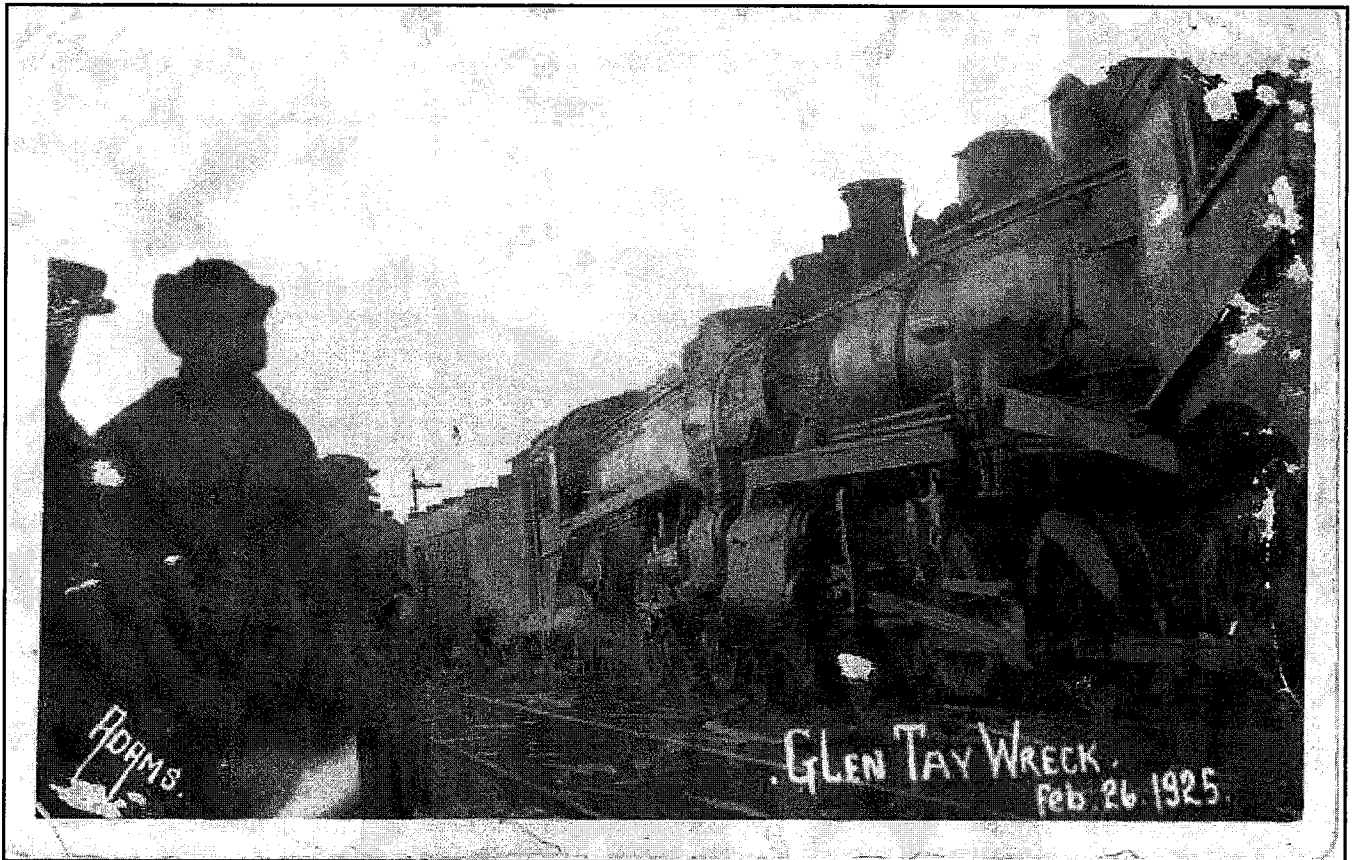
1925, February 26 - Glen Tay

Bruce Chapman wrote:

"Talking about Glen Tay; while I was dispatching in Smiths Falls back in the last century, several guys brought up the subject at this time of a wreck at Glen Tay back in steam days. Apparently a westbound passenger train was sitting at the station at the end of double track from Smiths Falls waiting for an eastbound passenger train, and the eastbound ran through the interlocking on a red while the switches were still lined for the westbound and hit him head-on."

These pictures were obtained by Bill Sanderson.





From the Toronto Star

Sixteen are injured in head-on collision

One man thought seriously hurt - others receive but bruises

Perth Ont. Feb 26 Sixteen people were slightly injured, one seriously, when a C.P.R train crashed head-on into a waiting freight train at Glen Bay (sic) three miles from here this afternoon. Albert Labelle of Montreal, who is not expected to recover, is in hospital there.

An open switch threw the passenger train into a siding where the freight was standing at the station at Glen Bay (sic). The engine crew, Walter Norris and A. Bourne, Toronto leaped to safety when they saw the crash coming and escaped with bruises. Norris is the most seriously injured of the two and is in hospital here.

One of the Toronto people who were slightly bruised was Mrs. J.W. Hobday of the Bernardo Homes, 538 Jarvis street, Toronto. The passengers included the Ottawa professional hockey team and a number of the players received bruises. They are Frank Ahearn, manager; G. Boucher, E. Campbell, P. Green, Alex Smith and Alex Connell. Others who received minor injuries were: W.O. Sobel, Philadelphia; W.O.L. Hazel, Montreal; Mrs B.G. Cullen, Florence, Italy; Mrs. T.G. Potter, Montreal; Sister St. Stephen, Montreal; S.S. Etienne, Montreal; Miss H. Page, Ottawa and Miss A. Dodds, Hamilton.

The train was the fast Canadian Pacific passenger No. 20 ("The Canadian") bound from Chicago to Montreal. It is due in Montreal about seven o'clock to-night.

[Return to Main Page of Railway Accidents](#)

Updated January 2014



Details of Railway Accidents in the Ottawa Area

1942, July 18 - Glen Tay, Canadian Pacific, Belleville subdivision

From the Ottawa Citizen 18 July 1942

12 persons hurt in train collision in Lanark county

9 passengers, three crewmen slightly injured as freight and express crash at Glen Tay.

Nine passengers and three train crew members were injured slightly early today when a fast freight train collided with the Montreal - Toronto express at Glen Tay station in Lanark County, the Canadian Pacific Railway announced.

The C.P.R. said the cause of the collision, at 2.28 a.m., has not yet been definitely determined. The line was blocked until 6.55 a.m.

C.P.R. train No. 904, fast eastbound freight, pulling into Glen Tay at 2.28 this morning, struck passenger train No. 21, which was standing on westbound main track in front of the station," the C.P.R. said.

"Eight cars on No.904 and one coach on No. 21 were derailed. Two members of the crew of No. 904 and one member of the crew of No. 21 and nine passengers were injured, none of them seriously. The line was cleared by 6.55 this morning.

List of injured. (included F.E. Lindsay, baggageman, Toronto; M. Cousineau, fireman, Smiths Falls; J. Duffy, fireman, Smiths Falls.)

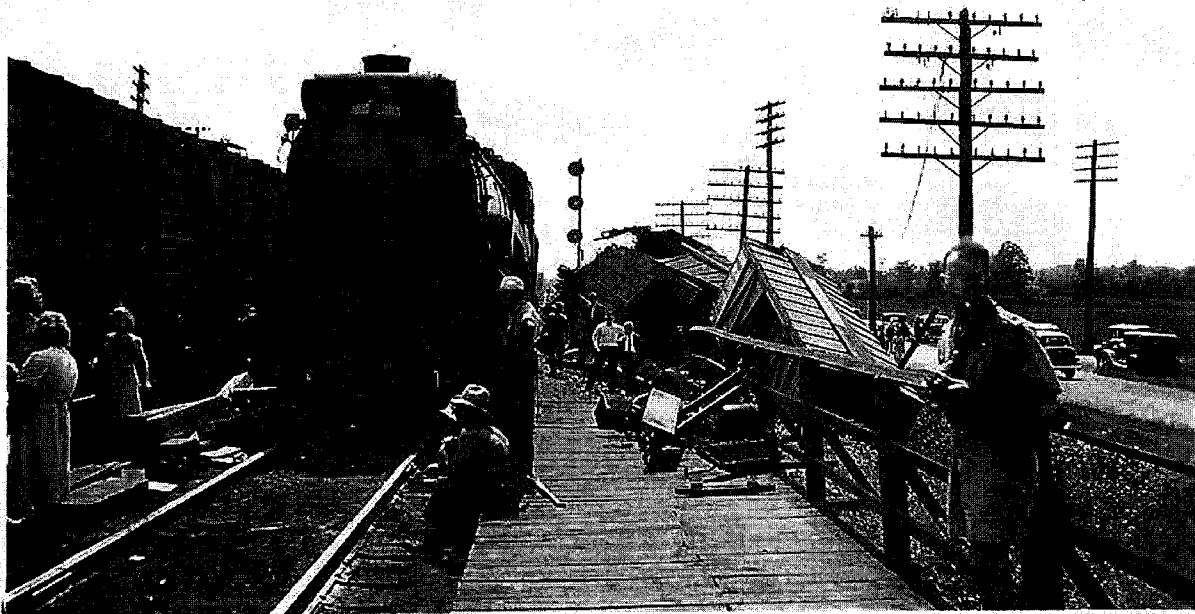
News of the derailment caused considerable excitement in Ottawa this morning. Many Ottawans were aboard the train which left Union Station here at 11 o'clock last night. The newspaper and railway offices handled many calls from friends anxious to find out whether any of the passengers had been killed or seriously injured. They were relieved to hear that only a small number of the passengers had been hurt, and these slightly.

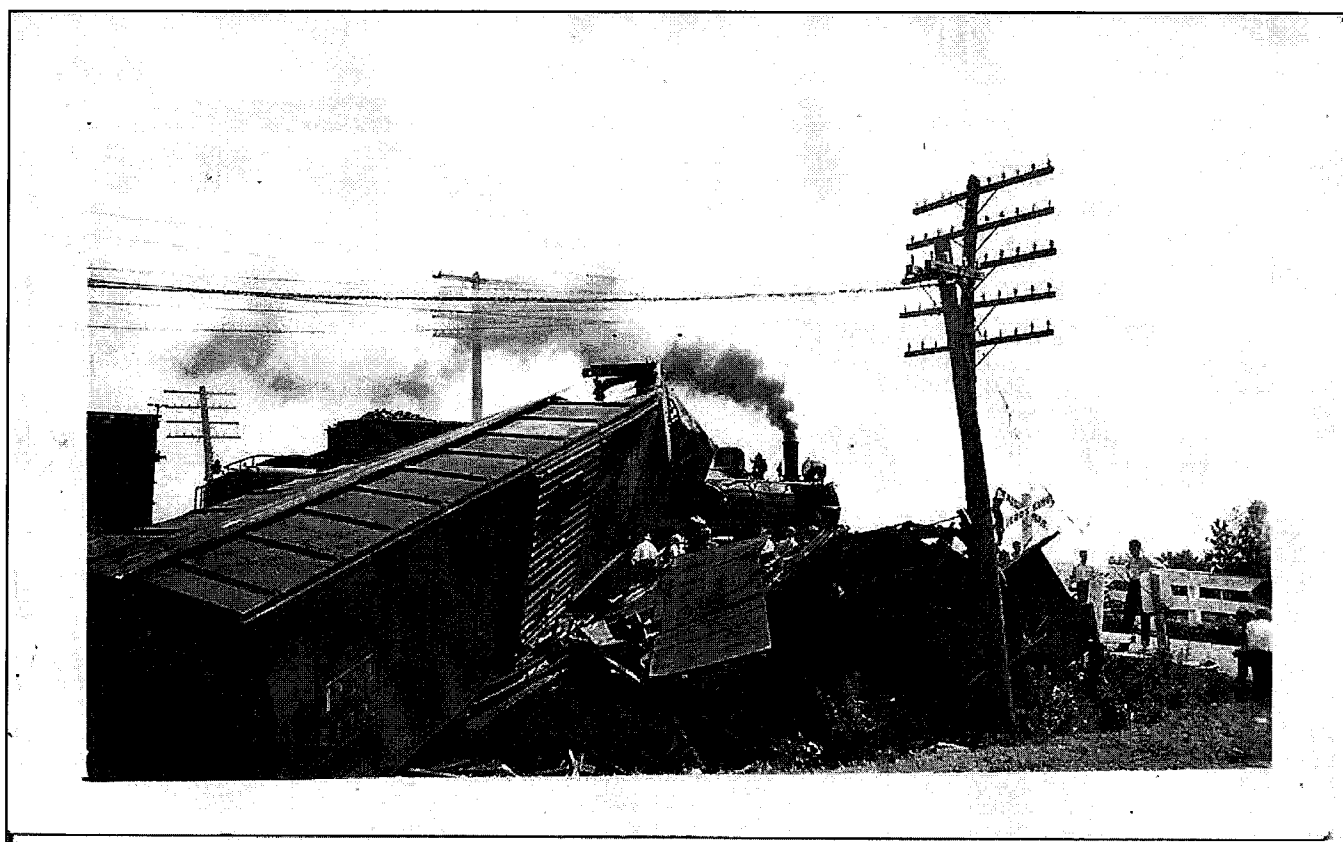
The morning train from Toronto, due to arrive in the Capital at 7.30, was two hours late, coming in at 9.30.

These pictures are with the permission of Scouts Canada National Museum, Ottawa

<http://voy.scouts.ca/ca/scouts-canada-national-museum>







[Return to Main Page of Railway Accidents](#)

Updated November 2014