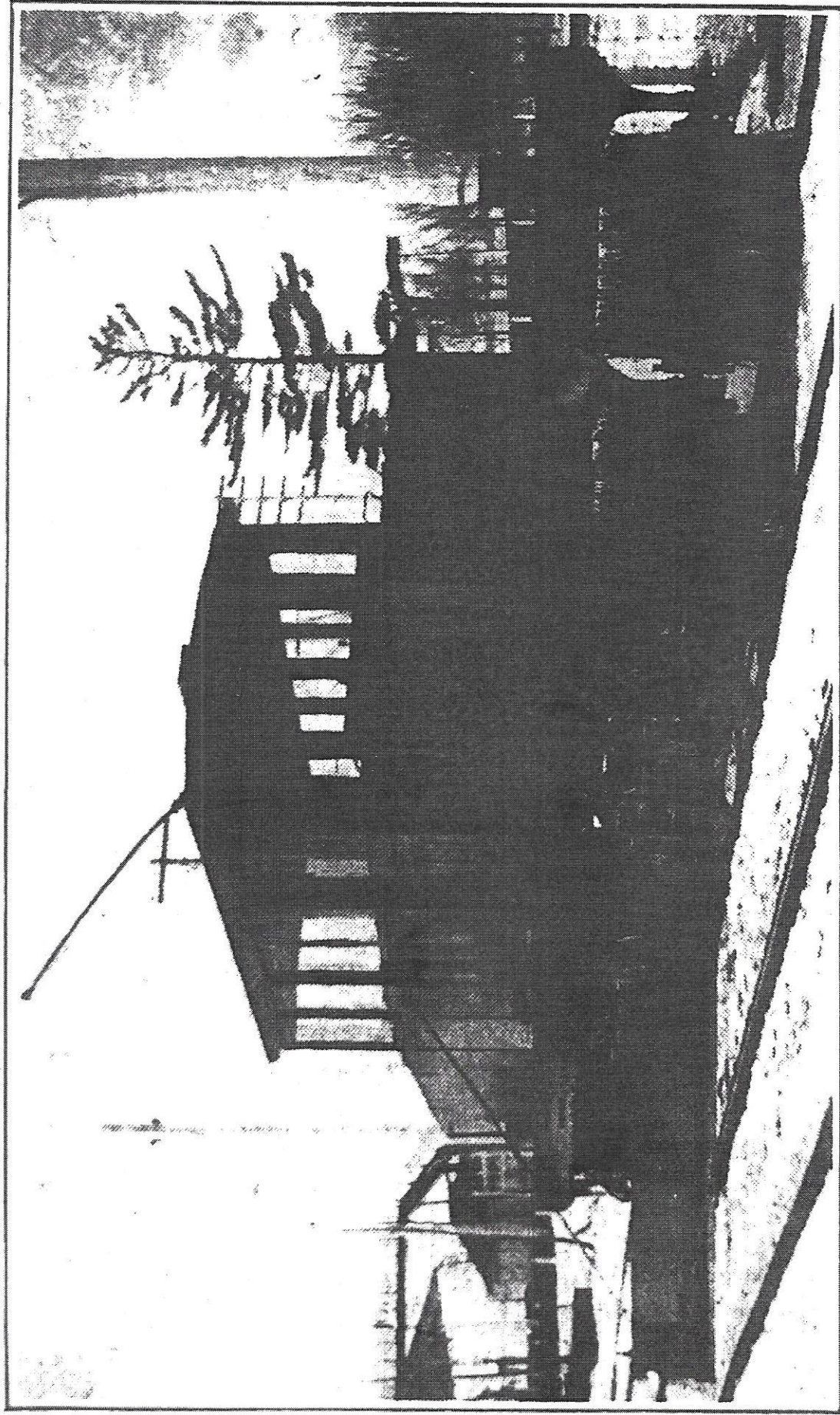


# HULL ELECTRIC RAILWAY.



Combined Snow Sweeper and Locomotive, Hull Electric Co.

is a large sliding door on one side. The Route Accounting Methods. — What



## Prepayment Trailer Cars for Hull Electric Company.

Four prepayment trailer cars have been ordered by the Hull Electric Co. for service on its interurban line between Ottawa, Ont., and Hull and Aylmer, Que., to be delivered in March, to meet the spring and summer traffic. They will be of the single end type, somewhat similar to the trailer recently ordered by the Montreal Tramways Co. for the heavy service on its St. Catherines St. line. The general dimensions are as follows:—

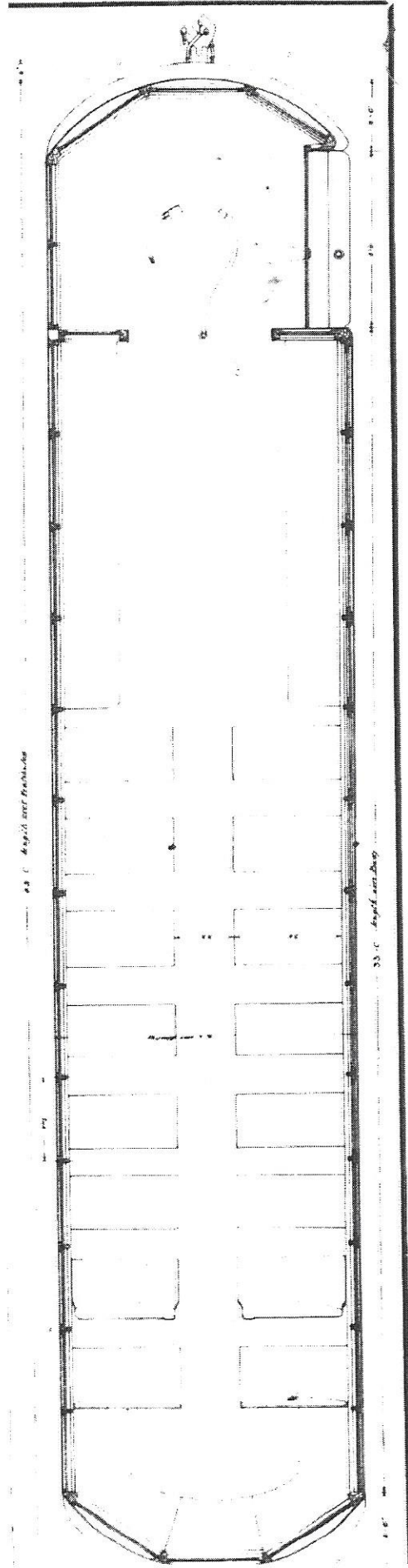
Length over bulkheads .....	42 ft.
Length over bumpers .....	43 ft.
Length over body .....	33 ft.
Width of body over sheeting .....	8 ft. 6 ins.
Width of body inside .....	7 ft. 8 ins.
Height of body from bottom of side sills ..	8 ft. 9 ins.
Side posts, centre to centre .....	30¼ ins.
Length front vestibule .....	7 ft.
Length rear vestibule .....	2 ft.
Width of aisle .....	22 ins.
Length of seats .....	36 ins.
Seating capacity .....	54

The underframe will be of a composite wood and steel construction, with the sill running in one piece through the car from bumper to bumper. The cross sills will be of oak mortised and tenoned into the longitudinal sills, the whole being tied together transversely with 5/8 in. steel tie rods, with a thread and nut on each end. The centre of the frame will be supported by two

tic  
si  
be  
ne

B  
m  
cc  
of  
of  
K  
W  
w  
ti  
m  
E  
ci  
rc  
of  
G

A  
T  
00  
re  
a  
fi  
st  
of  
A

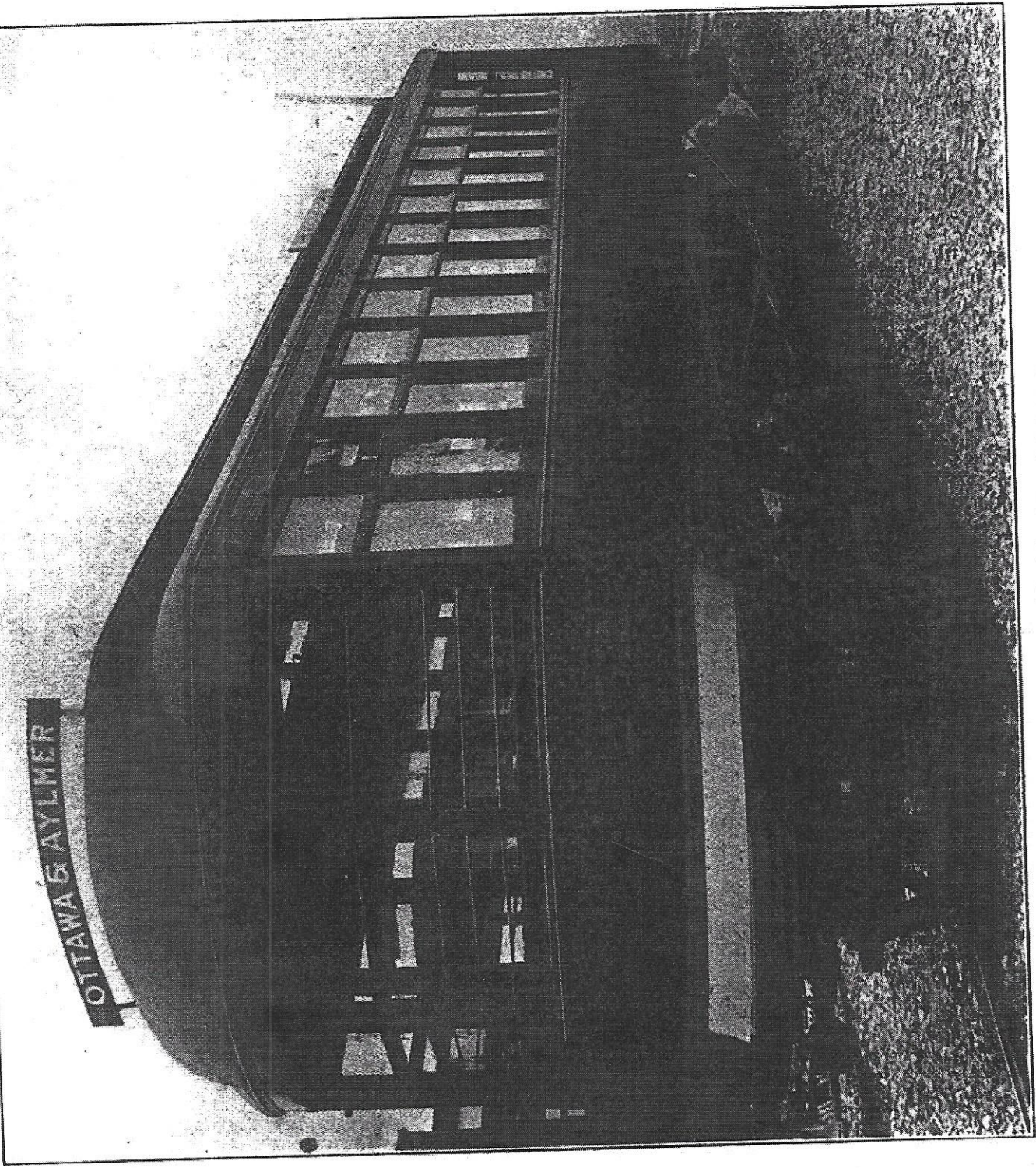


Prepayment Trailer Car for Hull Electric Co.

dle beams, suspended on two  $1\frac{1}{8}$  in. Amberley to about 4 miles short of Kin- it was announced that \$180,000 of the un- mounted bonds were deposited with a



OTTAWA & AYLMER



Traller Car, Hull Electric Company.

parade about five miles in length, in which

... .. a road of it

... .. n- ne er th de ft. of ed er- nd nd