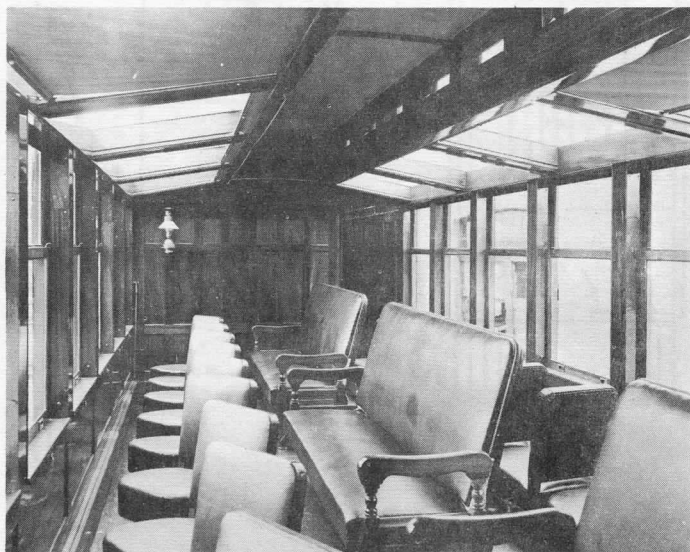


THE WORLD'S FIRST DOME CAR

This month, we reproduce photographs and a diagram from the collection of Omer Lavallee depicting one of Canadian Pacific's wooden 'dome' cars built between 1902 and 1906. The

cars, claimed to have been the first 'dome' cars in the world, operated between Laggan (Lake Louise), Alta., and Vancouver, B.C. on transcontinental trains.



The first car, No. 517, made its appearance in 1902. It was similar to the car in the illustration except that it did not have a glass roof in the centre section, nor did it have a clerestory in the same area. Moreover, the letter board extended the full length of the car. So successful was No. 517 that in 1906, CP introduced three further cars, Nos. 84-86 inclusive, which incorporated these additional features. The 84-series cars had a coupled length of 64'-4", and the exteriors were finished in naturally-varnished mahogany, with gold leaf lettering. There were swivel chairs in the two cupolas, while the normal-level centre section had swivel chairs and longitudinal reversible seats which faced outward toward the sides of the car.

These interesting cars survived until 1913 when they were converted to boarding cars following the appearance of the more conventional roofless mountain observation cars.

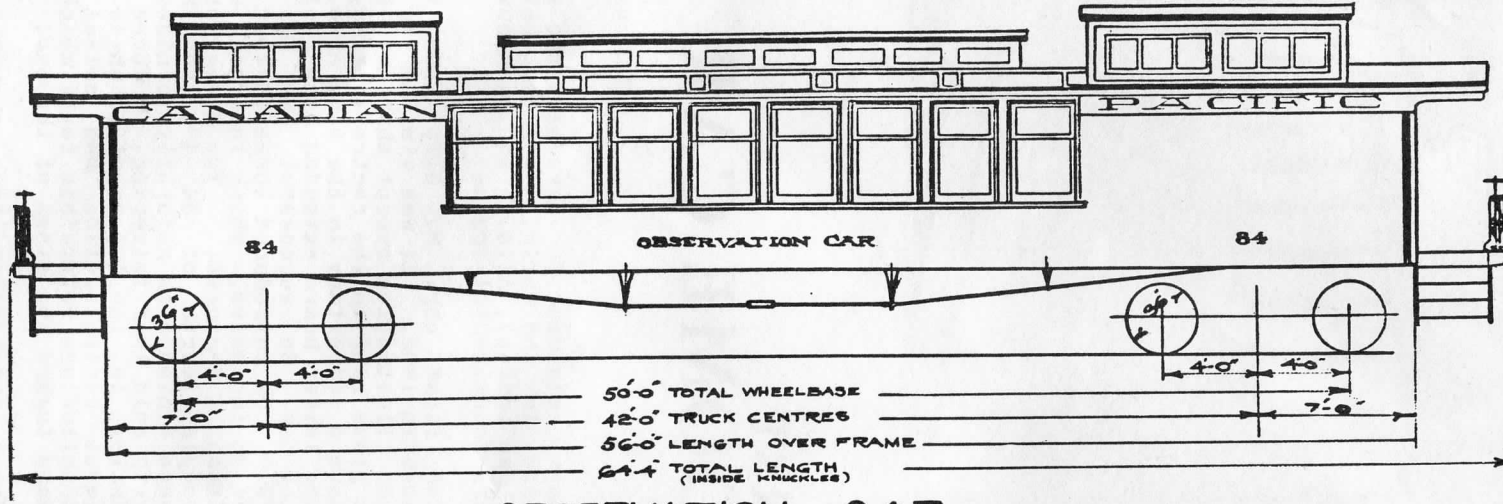
/OSAL

CANADIAN PACIFIC RAILWAY

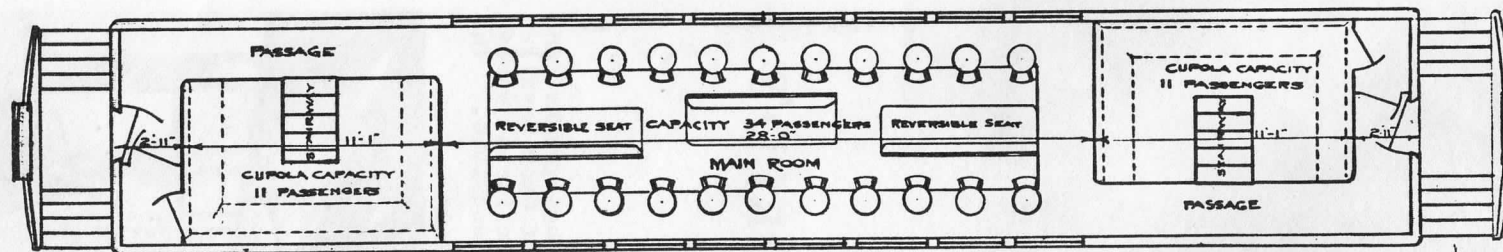
CAR DEPT MONTREAL

AUG. 1906

No. of CARS	CAR Nos	DATE	No. of CARS	CAR Nos	DATE
3	84, 85, 86	1906			



OBSERVATION CAR



CAPACITY 56 PASSENGERS

BUILDER	DATE BUILT	WEIGHT	FINISH		LIGHTING SYSTEM		HEATING SYSTEM		VESTIBULE	PLATFORM	BRAKE
			OUTSIDE	INSIDE	GAS LAMPS	OIL LAMPS	HEATER	STEAM HEAT			
C.P. RY	1906	75160	MAHOGANY	MAHOGANY	NIL	2 OIL	NIL	ST. STEAM	NONE	STEEL	W.A.B.

