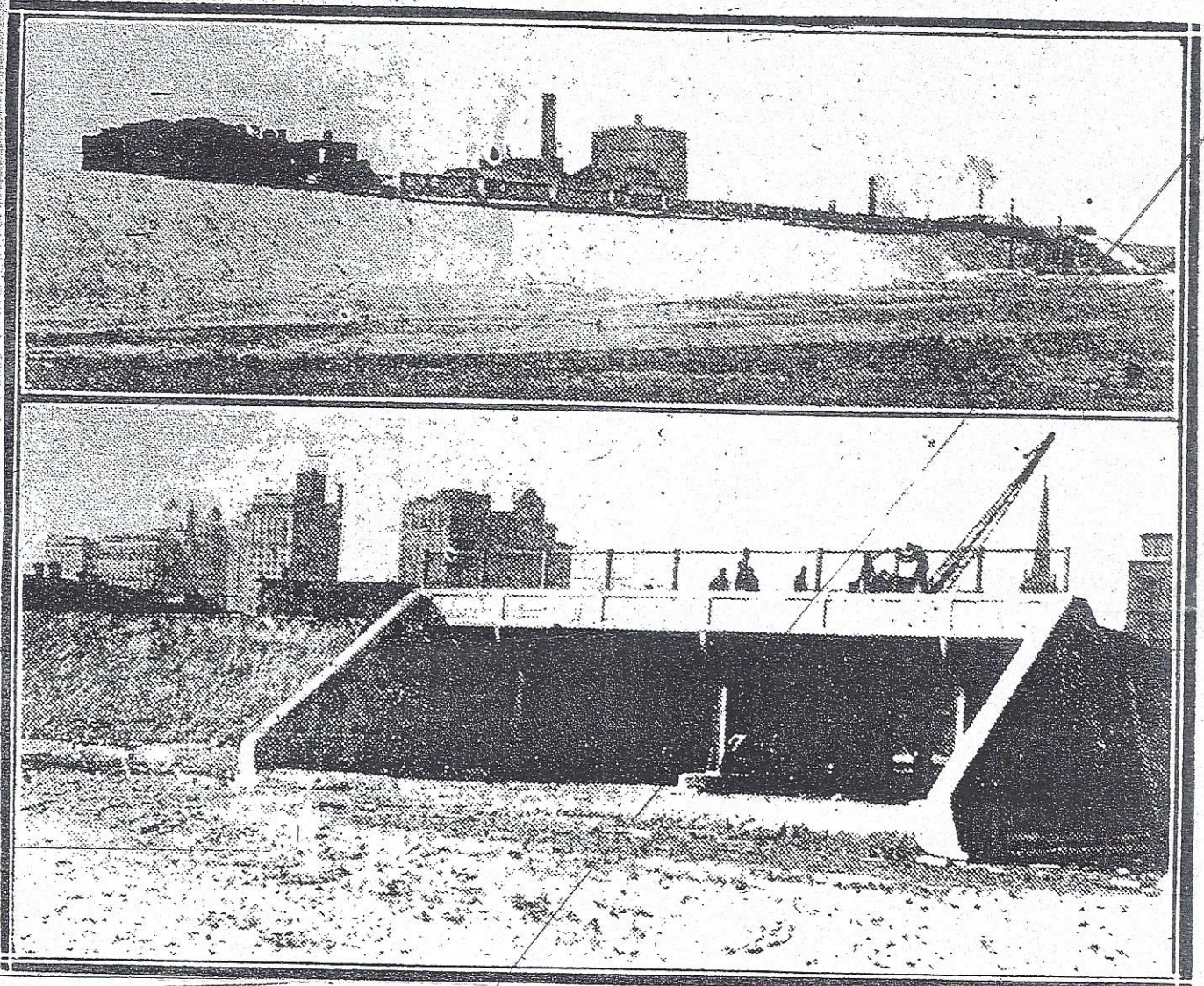


TORONTO, TUESDAY, OCTOBER 11, 1927.

RAILWAYS TRANSFORM SHORELINE OF TORONTO BAY



Along the shores of Toronto Bay, eastward from Yonge Street, a great transformation has taken place within the last few months, almost unknown to the general public. Sheltered from view by numerous freight cars and buildings of a former era, modern subways are in process of construction at the southern ends of many streets, and long trains of "fill" ply back and forth, adding to the earthen embankment that will some day carry the burden of rail transportation to and from the city. The illustrations above show, at the top, a work train on the top of the new embankment; below, the new subway at the foot of Jarvis Street, located where last year was water. In the distance may be seen the group of skyscrapers at King and Yonge Streets.

October 11 1927